

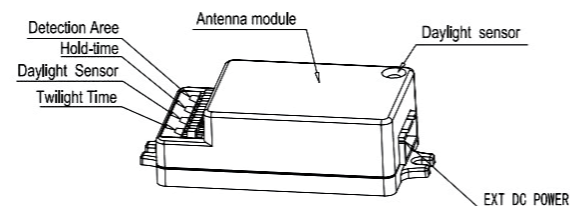
Stepped Dim Microwave Movement Sensor

This product is fitted with a stepped dim microwave movement sensor. Please see below detailed operating instructions.

MULTI-FUNCTION SENSOR SPECIFICATIONS:

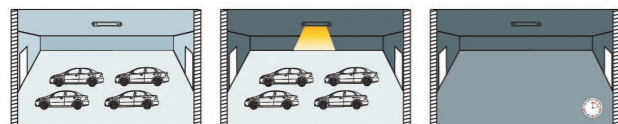
| | |
|-----------------------|---|
| DC Input Voltage | 12±1V DC |
| Rated Voltage | 12±0.6V DC |
| Stand-by Power | <0.5W |
| Efficiency | ≥80% |
| Operating Frequency | 5.8 GHz ±75 MHz |
| Transmitting Power | 0.5mW Max. |
| Hold Time | 5s / 90s / 3min / 10min |
| Stand-by DIM Level | 20% |
| Stand-by Period | 0s / 30s / 10min / +∞ |
| Detection Area | 100% / 75% / 50% / 25% |
| Daylight Sensor | 5Lux / 15Lux / 50Lux / Disable |
| Detecting Radius | 5m (mounting height 3m) |
| Mounting Height | 4m Max |
| Detecting Angle | 150° |
| Operating Temperature | -25°C...+60°C |
| Storage Temperature | Temperature: -40°C...+80°C; Humidity: 10% - 95% (non-condensing) |

Detection area is effected on volume of motion object and motion speed. The detection area is tested by a 165cm height person and walking speed is 0.3m/s.



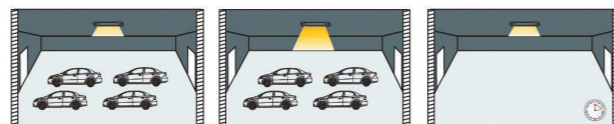
FUNCTION:

1) On/OFF function (stand-by period be set to "0"s)



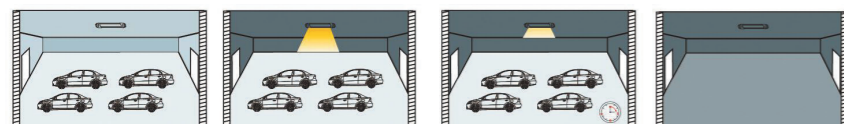
With sufficient ambient light, the light will not be switched on even if with motion signal.
With insufficient ambient light, the sensor switches on the light when motion is detected.
After elapse of hold time, the sensor switches off the light when no motion is detected.

2) step dimming function (stand-by period be set to "+∞")



If there is no motion detected, the light will be remained at a low light level all the time.
When motion is detected, the sensor will switch on the light to 100% brightness.
After elapse of hold time, the sensor dims the light at the present low light level if no motion is detected.

3) step dimming function (stand-by period be set to "10s / 1min / 3min / 5min / 10min / 30min")



With sufficient ambient light, the light will not be switched on even if with motion signal.
With insufficient ambient light, the sensor switches on the light when motion is detected.
After elapse of hold time, the sensor dims the light at a low light level if no new motion is detected.
after elapse of standby period, the sensor switches off the light if no motion is detected in the detection zone.

DIP SWITCH SETTING:

| | | | | | | | | | | | | | | | | | | | | | | | | | | | | | | | | | | | | | | | | | | | | | | | | | | | | | | | | | | | | | | | | | | | | | | | | | | | | | | | | | | | |
|--|---|--|---|--|---|---|---|------|----|---|---|-----|-----|---|---|-----|----|---|---|-----|---|--|---|---|--|---|---|---|----|----|---|---|-----|-----|---|---|------|----|---|---|-------|---|--|---|---|--|---|---|---|----|----|---|---|-------|-----|---|---|-------|----|---|---|------|---|--|---|---|--|---|---|---|----|----|---|---|-----|-----|---|---|-------|----|---|---|----|
| 1. Detection Area This determines the effective range of the motion detector and is set up by DIP switches at the sensor. Note that reducing the sensitivity will also narrow the detection range. | 2. Hold Time This determines the time the fitting remains at 100% level on motion detection and is set with DIP switches at the sensor. The walk test setting is useful when installing the fitting to establish correct operation and range. | 3. Daylight Sensor This setting holds off the 100% light output should there be sufficient daylight and is set using DIP switches at the sensor. | 4. Stand-by Period This setting determines how long the fitting should operate at 10% output after the hold time has elapsed and is set by DIP switching at the sensor. | | | | | | | | | | | | | | | | | | | | | | | | | | | | | | | | | | | | | | | | | | | | | | | | | | | | | | | | | | | | | | | | | | | | | | | | | | | | | | | | |
| I - 100% II - 75% III - 50% IV - 25% | I - 5s II - 90s III - 3min IV - 10min | I - +∞ II - 50Lux III - 15Lux IV - 5Lux | I - 0s II - 30s III - 10min IV - +∞ | | | | | | | | | | | | | | | | | | | | | | | | | | | | | | | | | | | | | | | | | | | | | | | | | | | | | | | | | | | | | | | | | | | | | | | | | | | | | | | | |
| <table border="1"> <tr><td></td><td>1</td><td>2</td><td></td></tr> <tr><td>I</td><td>●</td><td>●</td><td>100%</td></tr> <tr><td>II</td><td>○</td><td>●</td><td>75%</td></tr> <tr><td>III</td><td>●</td><td>○</td><td>50%</td></tr> <tr><td>IV</td><td>○</td><td>○</td><td>25%</td></tr> </table> | | 1 | 2 | | I | ● | ● | 100% | II | ○ | ● | 75% | III | ● | ○ | 50% | IV | ○ | ○ | 25% | <table border="1"> <tr><td></td><td>3</td><td>4</td><td></td></tr> <tr><td>I</td><td>●</td><td>●</td><td>5s</td></tr> <tr><td>II</td><td>○</td><td>●</td><td>90s</td></tr> <tr><td>III</td><td>●</td><td>○</td><td>3min</td></tr> <tr><td>IV</td><td>○</td><td>○</td><td>10min</td></tr> </table> | | 3 | 4 | | I | ● | ● | 5s | II | ○ | ● | 90s | III | ● | ○ | 3min | IV | ○ | ○ | 10min | <table border="1"> <tr><td></td><td>5</td><td>6</td><td></td></tr> <tr><td>I</td><td>●</td><td>●</td><td>+∞</td></tr> <tr><td>II</td><td>○</td><td>●</td><td>50Lux</td></tr> <tr><td>III</td><td>●</td><td>○</td><td>15Lux</td></tr> <tr><td>IV</td><td>○</td><td>○</td><td>5Lux</td></tr> </table> | | 5 | 6 | | I | ● | ● | +∞ | II | ○ | ● | 50Lux | III | ● | ○ | 15Lux | IV | ○ | ○ | 5Lux | <table border="1"> <tr><td></td><td>7</td><td>8</td><td></td></tr> <tr><td>I</td><td>●</td><td>●</td><td>0s</td></tr> <tr><td>II</td><td>○</td><td>●</td><td>30s</td></tr> <tr><td>III</td><td>●</td><td>○</td><td>10min</td></tr> <tr><td>IV</td><td>○</td><td>○</td><td>+∞</td></tr> </table> | | 7 | 8 | | I | ● | ● | 0s | II | ○ | ● | 30s | III | ● | ○ | 10min | IV | ○ | ○ | +∞ |
| | 1 | 2 | | | | | | | | | | | | | | | | | | | | | | | | | | | | | | | | | | | | | | | | | | | | | | | | | | | | | | | | | | | | | | | | | | | | | | | | | | | | | | | | | |
| I | ● | ● | 100% | | | | | | | | | | | | | | | | | | | | | | | | | | | | | | | | | | | | | | | | | | | | | | | | | | | | | | | | | | | | | | | | | | | | | | | | | | | | | | | | |
| II | ○ | ● | 75% | | | | | | | | | | | | | | | | | | | | | | | | | | | | | | | | | | | | | | | | | | | | | | | | | | | | | | | | | | | | | | | | | | | | | | | | | | | | | | | | |
| III | ● | ○ | 50% | | | | | | | | | | | | | | | | | | | | | | | | | | | | | | | | | | | | | | | | | | | | | | | | | | | | | | | | | | | | | | | | | | | | | | | | | | | | | | | | |
| IV | ○ | ○ | 25% | | | | | | | | | | | | | | | | | | | | | | | | | | | | | | | | | | | | | | | | | | | | | | | | | | | | | | | | | | | | | | | | | | | | | | | | | | | | | | | | |
| | 3 | 4 | | | | | | | | | | | | | | | | | | | | | | | | | | | | | | | | | | | | | | | | | | | | | | | | | | | | | | | | | | | | | | | | | | | | | | | | | | | | | | | | | |
| I | ● | ● | 5s | | | | | | | | | | | | | | | | | | | | | | | | | | | | | | | | | | | | | | | | | | | | | | | | | | | | | | | | | | | | | | | | | | | | | | | | | | | | | | | | |
| II | ○ | ● | 90s | | | | | | | | | | | | | | | | | | | | | | | | | | | | | | | | | | | | | | | | | | | | | | | | | | | | | | | | | | | | | | | | | | | | | | | | | | | | | | | | |
| III | ● | ○ | 3min | | | | | | | | | | | | | | | | | | | | | | | | | | | | | | | | | | | | | | | | | | | | | | | | | | | | | | | | | | | | | | | | | | | | | | | | | | | | | | | | |
| IV | ○ | ○ | 10min | | | | | | | | | | | | | | | | | | | | | | | | | | | | | | | | | | | | | | | | | | | | | | | | | | | | | | | | | | | | | | | | | | | | | | | | | | | | | | | | |
| | 5 | 6 | | | | | | | | | | | | | | | | | | | | | | | | | | | | | | | | | | | | | | | | | | | | | | | | | | | | | | | | | | | | | | | | | | | | | | | | | | | | | | | | | |
| I | ● | ● | +∞ | | | | | | | | | | | | | | | | | | | | | | | | | | | | | | | | | | | | | | | | | | | | | | | | | | | | | | | | | | | | | | | | | | | | | | | | | | | | | | | | |
| II | ○ | ● | 50Lux | | | | | | | | | | | | | | | | | | | | | | | | | | | | | | | | | | | | | | | | | | | | | | | | | | | | | | | | | | | | | | | | | | | | | | | | | | | | | | | | |
| III | ● | ○ | 15Lux | | | | | | | | | | | | | | | | | | | | | | | | | | | | | | | | | | | | | | | | | | | | | | | | | | | | | | | | | | | | | | | | | | | | | | | | | | | | | | | | |
| IV | ○ | ○ | 5Lux | | | | | | | | | | | | | | | | | | | | | | | | | | | | | | | | | | | | | | | | | | | | | | | | | | | | | | | | | | | | | | | | | | | | | | | | | | | | | | | | |
| | 7 | 8 | | | | | | | | | | | | | | | | | | | | | | | | | | | | | | | | | | | | | | | | | | | | | | | | | | | | | | | | | | | | | | | | | | | | | | | | | | | | | | | | | |
| I | ● | ● | 0s | | | | | | | | | | | | | | | | | | | | | | | | | | | | | | | | | | | | | | | | | | | | | | | | | | | | | | | | | | | | | | | | | | | | | | | | | | | | | | | | |
| II | ○ | ● | 30s | | | | | | | | | | | | | | | | | | | | | | | | | | | | | | | | | | | | | | | | | | | | | | | | | | | | | | | | | | | | | | | | | | | | | | | | | | | | | | | | |
| III | ● | ○ | 10min | | | | | | | | | | | | | | | | | | | | | | | | | | | | | | | | | | | | | | | | | | | | | | | | | | | | | | | | | | | | | | | | | | | | | | | | | | | | | | | | |
| IV | ○ | ○ | +∞ | | | | | | | | | | | | | | | | | | | | | | | | | | | | | | | | | | | | | | | | | | | | | | | | | | | | | | | | | | | | | | | | | | | | | | | | | | | | | | | | |

Care and Safety

We recommend cleaning with a soft dry cloth. Do not use solvents or abrasive cleaners as these could damage the finish. For your safety, always switch off the power supply before cleaning.


Hero CCT Step Dimming

95543



Thank you for purchasing this light fitting. Please read the instructions carefully before use to ensure safe and satisfactory operation of this product. Please retain these instructions for future reference.

Warning

 This light fitting is double insulated and does not require connection to an earth circuit.

Please read these instructions carefully before commencing any work.

This unit must be fitted by a competent and qualified electrician.

Install in accordance with the IEE Wiring regulations and current Building Regulations.

Check the pack and make sure you have all the parts listed.

To prevent electrocution switch off at the mains supply before installing or maintaining this fitting. Ensure other persons cannot restore the electrical supply without your knowledge.

If you are in any doubt, please consult a qualified electrician.

This light fitting should be connected to a circuit with a 30mA RCD fitted.

If replacing an existing fitting, make a careful note of the connections.

Waste electrical products should not be disposed of with household waste. Please recycle where facilities exist. Check with your local authority or retailer for recycling advice.

Technical data

Supply Voltage: 240 V~, 50 Hz

Bulb Type: 9/14/18W LED module (SMD) CCT, 3000/4000/6000K

The light source of this luminaire is not replaceable; when the light source reaches its end of life the whole luminaire shall be replaced.



Conformity with all relevant EC Directive requirements.



The power supply is Double Insulated and does not require connection to an Earth circuit.



Waste electrical products should not be disposed of with household waste. Please recycle where facilities exist. Check with your Local Authority or local store for recycling advice.



This product is not suitable for dimming.



This product is rated at IP65



This product is rated at IK10.

Layout

Plan the desired layout of these fittings carefully, ensuring the cables will reach the distances between each light fitting.

Avoid locating any cables in positions that would cause a hazard. Position cables and junction boxes (not supplied) away from areas where they may be at risk from being cut, trapped or damaged.

The mains supply cable must have a minimum cross section area of 1.0mm².

Cables must be protected using suitable conduit or plastic trunking.

The products can be wall or ceiling mounted. If wall mounting ensure that the power supply is at the bottom.

Individual casings

The following individual casings are available for purchase separately.

| | | |
|----------------------|----------------------|--------------------------------|
| 95545 : Chrome plain | 95548 : Black plain | 95551 : Anthracite grey plain |
| 95546 : White eyelid | 95549 : Black eyelid | 95552 : Anthracite grey eyelid |
| 95547 : White grill | 95550 : Black grill | 95553 : Anthracite grey grill |

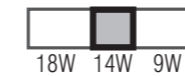
Installation

Existing fittings must be completely removed before installation of a new product. Before removing the existing fitting, **carefully note the position of each set of wires.**

Note that the switch is turned off before installation.

The ceiling surface must be flat and smooth to ensure a good fit.

Ensure that the screws and cable entry points are sealed to maintain the IP rating of the product.



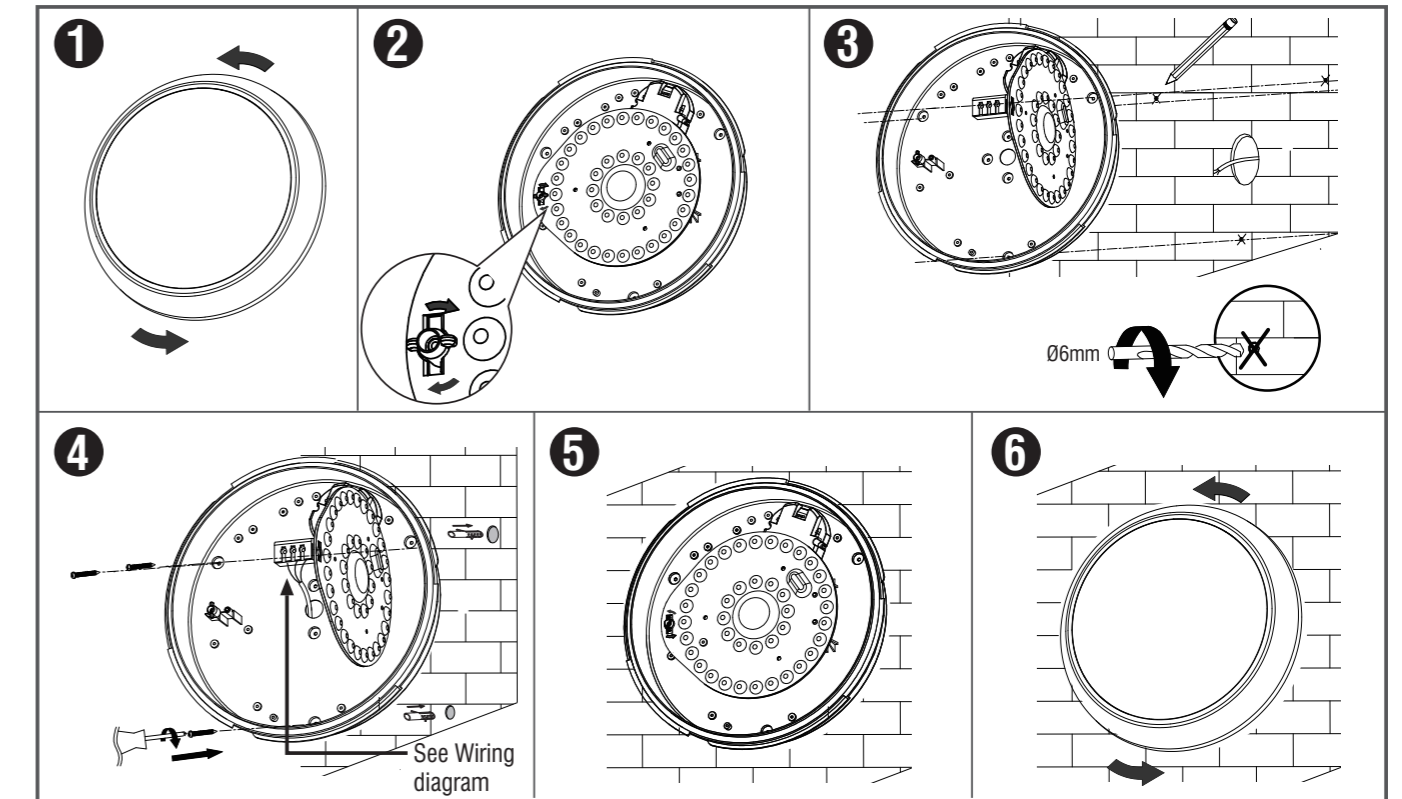
The wattage is changeable between 9/14/18W using the wattage switch on the drive before installation.

6000K 4000K 3000K



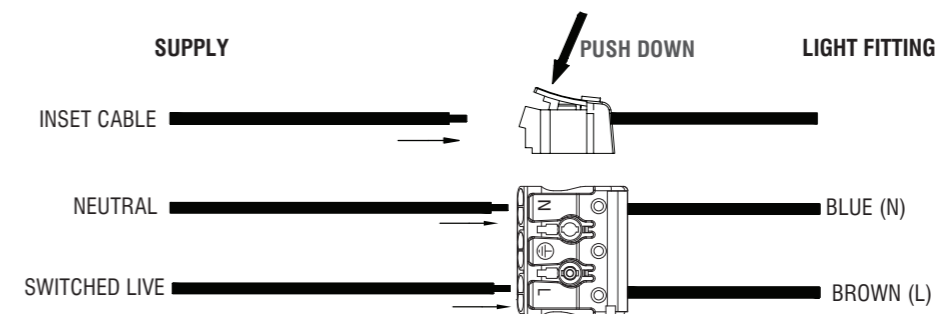
The colour is changeable between 3000/4000/6000K using the CCT switch on the drive before installation.

- Twist and remove the lamp cover from the product, keep safe for refitting later.
- Turn the clip to loose the LED tray in the rear casing.
- Using the rear casing as a template mark the position to drill out the fixing holes. Take care to avoid damaging any concealed wiring and pipes.
- Fix the rear casing into the position using the installation plugs and screws.
- Pull the cable through the cable entry hole and seal to maintain the IP rating and wire as detailed Wiring Diagram.
- Refit the LED tray back into the rear casing and lock the clip.
- Twist the lamp cover back onto the product and lock in place.
- Replace fuse or circuit breaker and switch on. Your light is now ready for use.



Wiring

Having correctly identified the wiring from your existing light fitting, pull the mains wire through the hole and connect to the quick fit connection block in the following way. No tools are necessary.



Check that...

You have correctly identified the wires.

The connections are tight.

No loose strands have been left out of the connection block.